

**ROOF**

STANDING SEAM NATURAL ZINC ROOF COVERING ON ENKAMET UNDERLAY ON 18mm WBP PLYWOOD ROOF DECK (ENSURE MIN 40mm VENTILATION SPACE TO UNDERSIDE OF PLYWOOD MAINTAINED AT ALL TIMES) ON 225x44mm GRADE C16 TIMBER RAFTERS

BREATHER MEMBRANE ON MINERAL WOOL INSULATION BETWEEN AND OVER 225x44mm C16 TIMBER JOISTS ON 100x44mm TIMBER SUB STRUCTURE ON VAPOUR BARRIER ON COFFERS LINED IN 100x18mm SW PAINTED TIMBER BOARDING

**COFFERED CEILING TO BAR**

**EXTERNAL CEILING TO TERRACE**

100x18mm PAINTED SW TIMBER BOARDING TO EXTERNAL TERRACE ON 225x44mm C16 TIMBER CEILING JOISTS

200mm FAIR FACED WATERPROOF CONCRETE ON TREATED BATTENS TO FORM AIR SPACE ON INSULATED DRY-LINING ON TIMBER BATTENS FORMING SERVICE VOID ON 100x18mm PAINTED SW TIMBER BOARDING

**EXTERNAL WALL 01**

**EXTERNAL TERRACE**

POWER-WASHED FINISH TO 150mm INSITU CONCRETE SLAB WITH A393 MESH TOP&BOTTOM ON 50mm SAND BLINDING ON MIN 350mm CL808 WELL CONSOLIDATED HARDCORE FILL

**RING BEAM**

MIN. 600x300mm RC RINGBEAM WITH RECESSED GUTTER TOP SURFACE TO BE GROUND FINISH VERTICAL FACES TO BE FAIR FACED FINISH CONCRETE TO BE CAST DIRECTLY ON TO MASONRY WALL BELOW

**EXTERNAL WALL 02**

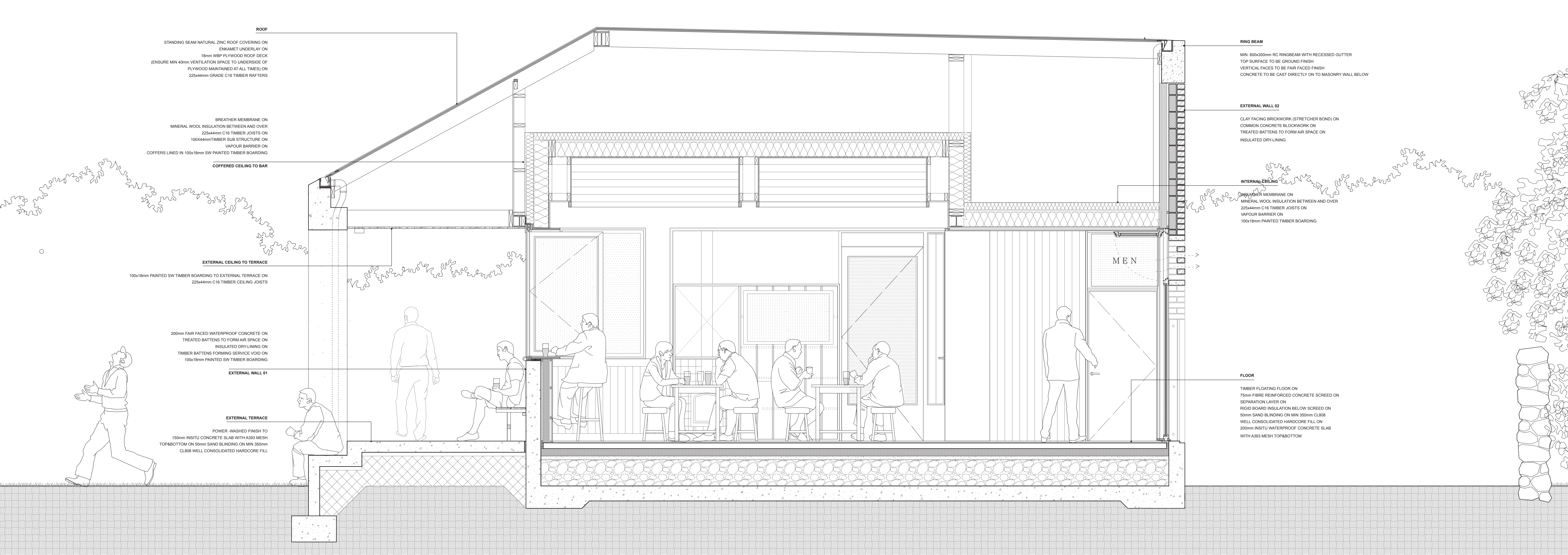
CLAY FACING BRICKWORK (STRETCHER BOND) ON COMMON CONCRETE BLOCKWORK ON TREATED BATTENS TO FORM AIR SPACE ON INSULATED DRY-LINING

**INTERNAL CEILING**

BREATHER MEMBRANE ON MINERAL WOOL INSULATION BETWEEN AND OVER 225x44mm C16 TIMBER JOISTS ON VAPOUR BARRIER ON 100x18mm PAINTED TIMBER BOARDING

**FLOOR**

TIMBER FLOATING FLOOR ON 75mm FIBRE REINFORCED CONCRETE SCREED ON SEPARATION LAYER ON RIGID BOARD INSULATION BELOW SCREED ON 50mm SAND BLINDING ON MIN 350mm CL808 WELL CONSOLIDATED HARDCORE FILL ON 200mm INSITU WATERPROOF CONCRETE SLAB WITH A393 MESH TOP&BOTTOM



MEN